

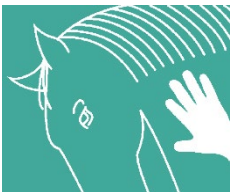
Faculty

Mary Helene Chaplin, PT, HPCS

Mary Helene graduated from Boston University's Sargent College with a degree in Physical Therapy in 1984 and received an M.S. in Health Care Administration from Salve Regina University in 2018. Mary Helene has been incorporating hippotherapy into PT services for over 20 years, which has allowed her to combine her love of horses with the practice of physical therapy. Mary Helene has extensive experience providing physical therapy to individuals with multiple developmental disabilities across the lifespan, from early intervention and school aged children to working with aging adults with developmental and intellectual disabilities. She is currently working with typically developed geriatric adults and consulting to and mentoring other therapists who are incorporating equine movement into their therapy practice. Mary Helene began training as a faculty member for the American Hippotherapy Association in 2003 and became a Coordinating Faculty Member in 2006. In 2019, she began serving on the AHA, Inc Board of Directors and is a current member of the Research Committee.

Speaker Disclosure: Financial: Mary Helene Chaplin is an independent contractor for the AHA, Inc. and receives a fee from AHA, Inc. for this program. Non-Financial: Mary Helene Chaplin is a member of the AHA, Inc.

Course Location



59 Summer Street
Rehoboth, MA 02769

Travel Information

Airport: TF Green Airport Warwick, RI

Lodging Information

Hampton Inn 1030 Fall River Ave, Seekonk, MA 02771 (508) 336-9000

Best Western Plus Providence-Seekonk Inn 45 Mink St Seekonk, MA 02771 (508) 336-4927

Quality Inn 341 Highland Ave, Seekonk, MA 02771 (508) 336-7900

Registration Information

A certificate of attendance will be provided. Contact hours total 27. Courses are not pre-approved unless indicated otherwise.

All attendees will receive a hard copy of the AHA, Inc. Hippotherapy Treatment Principles - Part 1 course manual. The course fee also includes lunch. During the course you will be on and/or working directly with horses. Please have appropriate clothing/ footwear. Helmets will be provided. If your weight exceeds 180 lbs., you may be excused from the mounted portion of the course. Indicate any special needs on the registration form (i.e. food allergies) and by contacting the AHA, Inc. office prior to submitting your registration form.

The criteria for satisfactory completion of this course are: (1) documented attendance for the entire course, (2) learners' demonstration of their acquisition of skills through satisfactory completion of interactive practicums and/or active participation in course discussions; and (3) completion of the course evaluation form.

Cancellation Policies: AHA, Inc. reserves the right to adjust course dates, times and faculty to accommodate unforeseen circumstances

including cancellation of the course due to insufficient registration up to 3 weeks prior to the scheduled start date. Notification will only be made to advanced registrants. Neither AHA, Inc. nor the course location is responsible for any expenses incurred by registrants due to such adjustments.

Participant cancellation requests must be made in writing no less than 3 weeks prior to the course start date to receive a refund, minus a \$100 administrative fee. No refunds will be given for cancellations received within three weeks prior to the start of the course.



The American Occupational Therapy Association, Inc.
APPROVED PROVIDER PROGRAM

"AHA, Inc. is an
AOTA Approved

Provider of continuing education. Provider #: 11414. Full attendance at this course qualifies for 27 contact hours or 2.7 AOTA CEUs in the Category of Domain of OT, Occupational Therapy Process, and Professional Issues. The assignment of AOTA CEUs does not imply endorsement of specific course content, products, or clinical procedures by AOTA. Course



American Hippotherapy Association, Inc. is approved by the Continuing Education Board of the American Speech-Language-Hearing Association (ASHA) to provide continuing education activities in speech-language pathology and audiology. See course information for number of ASHA CEUs, instructional level and content area. ASHA CE Provider approval does not imply endorsement of course content, specific products or clinical procedures.

Level: Introductory."

This program is offered for 2.55 ASHA CEUs (Introductory level, Professional area).

A Certificate of Attendance will be provided. Contact hours are 27. There are no continuing education credits for the Equine Skills pre-requisite. Students will receive continuing education credits for the one day online module.



American Hippotherapy Association Inc.
Presents

Hippotherapy

Treatment Principles –

Part I

Greenlock Therapeutic

Riding Center

August 28-30, 2020



Please email or mail registration information to AHA Inc.

mwood@theahainc.org

2537 Research Blvd. Suite #203

Fort Collins, CO 80526

Course Description

Course prerequisite: Successful completion of the on-line “Intro to Equine Skills” test reviewing equine care and management. Completion of the course prerequisite must be done at least 3 weeks prior to the start of the Hippotherapy Treatment Principles – Part 1 course. AHA, Inc. staff will confirm with that the test has been completed and passed. The cost of the test included in the course tuition. You will be contacted by the AHA, Inc. office in regards to test enrollment.

Course Overview: This course is an overview of the principles of hippotherapy, designed for therapists (PT, OT, SLP, PTA, COTA, SLPA) interested in utilizing hippotherapy in their practice. The course is equivalent to 4 days total instruction: 1 day of on-line study prior to 3 days of in person instruction. The on-line study consists of foundational information required for an understanding of the principles of hippotherapy.

Hippotherapy Treatment Principles – Part 1 Learning Objectives and Outcomes:

Occupational therapists, physical therapists, and speech therapists taking this course will gain an understanding of the principles, history, theory and research of the application of hippotherapy --skilled equine movement--as a treatment strategy/tool within a plan of care (POC) in OT, PT and SLP practice. Therapists will observe and analyze a therapy treatment with skilled equine movement, and discuss the adaptive responses in the patient. Therapists will be introduced to skilled equine movement and the effect of the horse’s conformation and movement on the systems of the human body for implementation in a POC for a variety of diagnoses and patients. The following learning outcomes will be assessed during participation in active learning activities, learner demonstration of skills during practicums, and class discussions and small group work.

Learning Outcomes:

- Therapists will be able to define the term hippotherapy, skilled equine movement and identify at least 3 primary principles of hippotherapy.
- Therapists will be able to list and describe at least 5 key considerations in patient evaluation for determining if hippotherapy, skilled equine movement, should be included in a patient’s Plan of Care.

- Therapists will be able to list and describe at least 6 precautions/contraindications that should be considered when deciding on the inclusion of hippotherapy, skilled equine movement into a patient’s plan of care and describe appropriate safety procedures during intervention.
- Therapists will be able to list and describe the 5 primary parameters with respect to matching patient impairment, size and functional limitation and horse size, gait and temperament for optimal and safe incorporation of skilled equine movement into a POC to maximize functional outcomes.
- Therapists will be able to describe the effect of skilled equine movement on at least 3 different patient diagnoses as related to their systems impairment, participation restriction and functional outcomes through participation in a treatment planning practicum.
- Therapists will demonstrate correct documentation in writing treatment and progress notes related to the current use of equine movement in OT, PT and SLP practice.
- Therapists will be able to list 3 examples of how the therapist using skilled equine movement incorporates the AHA Best Practice Guidelines into practice.
- Therapists will be able to cite 3 current research articles applicable to hippotherapy, skilled equine movement.

Basic Course Schedule:

Day 1

7:30	Registration & Introductions - Discuss therapy and equine background
8:15	Review Objectives (need for continuing education credits) Hippotherapy – Rationale and the AHA description, Horse Gaits, Desirable Qualities of Equine Motion, Aspects of the Horse’s walk that can be manipulated, Training and Maintenance, Horse Handling
9:15	Conformation and Movement Analysis of 3 – 4 horses
10:15	BREAK
10:30	Human and Horse Movement Interaction Posture and Balance
12:30	LUNCH
1:15	Tour of facility Tour of Facility and Tack Room
1:30	Horse Handling and Safety Demonstration
2:15	Leading Demo and Practicum
3:15	BREAK

3:30	Mounted Practicum #1 opportunity to experience 3 dimensions of motion
4:30	Review and Discussion
5:00	End of Day

Day 2

8:00	Faculty demonstration and Participant practicum – Motor Tasks and Impairment
10:00	BREAK
10:15	Theory of Dynamic Systems
11:00	Practice Transfers with horses - Practice Emergency procedures, Side walker training, working with Horse Handler
12:00	LUNCH
12:45	Mounted Practicum # 2
1:45	Review of mounted practicum as a treatment session Horse Selection and Patient Selection; Unique Contributions of the Horse; Position Options and Alternative Positions
3:15	BREAK
3:30	GROUP WORK – Treatment Teams develop treatment plan for a paper patient
5:00	End of Day

Day 3

8:00	Treatment Plan Presentations – Group Discussions
9:15	Practicum - Position Options & Alternative Positions
10:45	BREAK
11:00	Review of ICF model
12:00	LUNCH
12:45	Patient Demonstrations
2:00	Discuss Patient Demonstrations and their observations; Review AHA and PATH Relationship; AHCB and credentialing; Review other AHA Courses; Final Question and Answer discussion
3:00	End of Day

This course may be attended by licensed Speech-Language, Physical and Occupational therapists and therapy assistants (PTA, OTA, SLPA). **There is no participant substitutions due to the pre-requisite requirement.**

The curriculum may be utilized only under conditions set forth by AHA, Inc.

Registration Form – HTP – Part 1 August 28-30, 2020

Name: _____

Address: _____

City: _____ State: _____ Zip: _____

Phone: _____

Email: _____

*AHA, Inc. Member #: _____

New memberships are accepted.

Join today at www.americanhippotherapyassociation.org.

Credentials to be listed on course certificate:

Height _____ Weight _____

Special needs, mobility restrictions, diet, etc. **Please notify the AHA, Inc. office prior to completing this registration of your special needs.**

Registration is limited.

Early registration on or before 8/7/20

_____ \$875.00 for AHA, Inc. Member

_____ \$975.00 for Non-AHA, Inc. Member

After 8/7/2020

_____ \$950.00 for AHA, Inc. Member

_____ \$1,050 for Non-AHA, Inc. Member

___ Check - payable to AHA Inc.

___ Charge MC VISA AM EX

Name on Card _____

Card Number _____

Exp. Date _____ Security Code _____

Billing zip code _____